

Scrub Suits



Disposable Scrub Suits

Made from medium – weight blue, 40 – 50 GSM 3 layer non-woven SMS material
V or Round Collar.
With 3 pockets.
Excellent protection and breathability.
Pants have elastic waist or ties on.
S-M-L-XL-XXL sizes.

Directives and Regulations

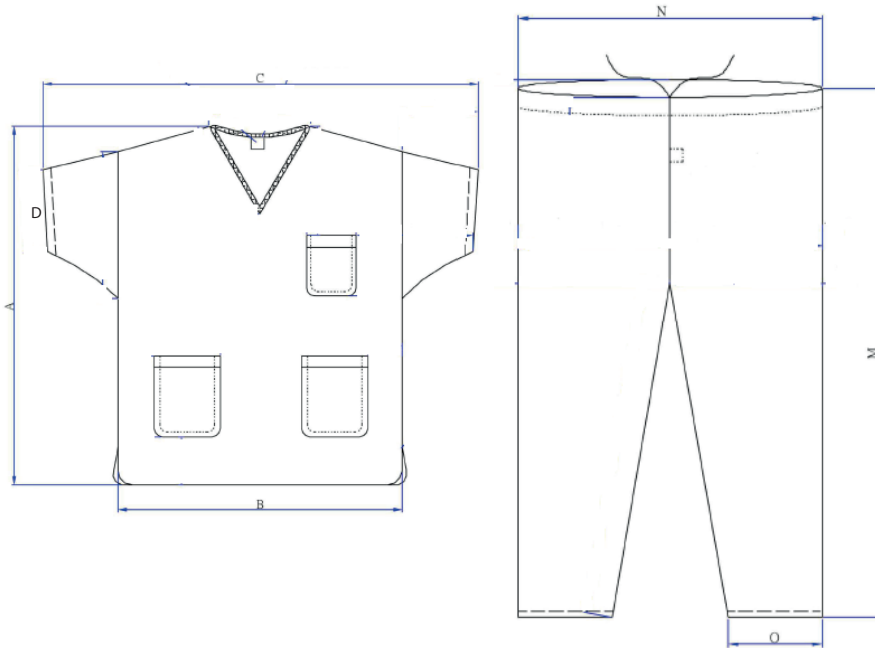
93/42/EEC Medical Device Directive

Related Standards

TS EN 13795 - A1
EN ISO 13485
ISO 9001:2015

Scrub Suit

SPSB-2721



SCRUB SUIT SIZES (cm)							
Code	A	B	C	D	M	N	O
XS	68	51	78	18	104	48	22
S	71	54	84	20	105	51	23
M	74	57	90	20	106	53	23.5
L	76	61	96	21	108	57	24
XL	78	63	102	21.5	112	61	24.5
XXL	82	68	111	24	117	65	25
XXXL	82	77	122	24	121	72	25
Tolerance	+2	+2	+2	+1.5	+2	+2	+1



UniAghort Ltd.Şti
Çınarlı mh. Dr. Ali Menteşoğlu cad. Müge Apt. no: 26 / 4 01060 Seyhan Adana Turkey
Tel Pbx: +90 322 459 41 01 www.supremedic.com / info@supremedic.com